

Mission:

To protect, promote & improve the health of all people in Florida through integrated state, county & community efforts.



Ron DeSantis
Governor

Scott A. Rivkees, MD
State Surgeon General

Vision: To be the **Healthiest State** in the Nation



October 16, 2020

COVID-19 Situation Report #32

Current St. Lucie COVID-19 Activity:

As of October 16, there were 8,521 cases of COVID-19 including 29 non-Florida cases with 315 deaths. The Health Department continues to interview new cases in order to investigate and conduct contact tracing.

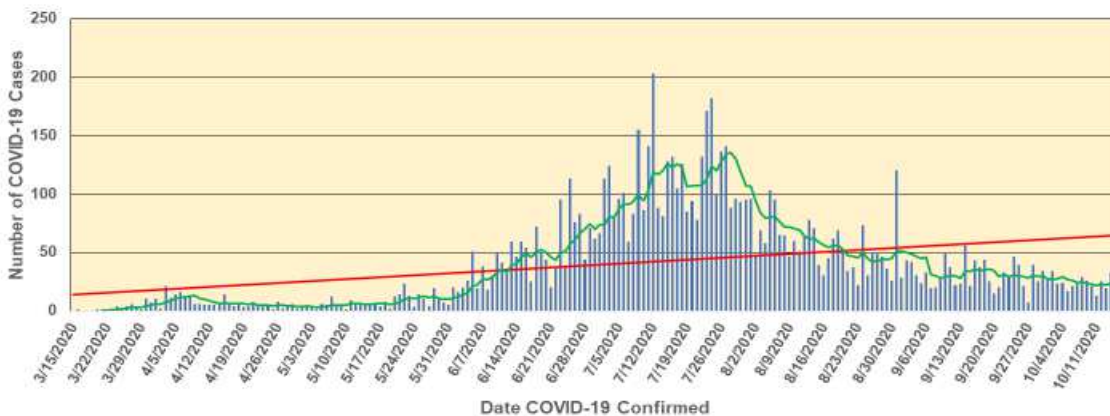
You may find the most current information on Florida’s COVID-19 Data and Surveillance Dashboard that contains LIVE COVID-19 case information.

<https://experience.arcgis.com/experience/96dd742462124fa0b38ddedb9b25e429>

St. Lucie COVID-19 Outbreak Overview: Current and Past Activity

This graph shows the date that a person became a case of COVID-19 from the beginning of the COVID-19 outbreak in St. Lucie County. After the March introduction of COVID-19 into St. Lucie County, COVID-19 infections decreased in April and remained low during May. Starting at the end of May, cases increased steadily through June to peak levels in July. **COVID-19 levels have decreased steadily and have stabilized over the past several weeks.**

***Cumulative Cases of COVID-19 in Children <18 Years Old by Year of Age with Linear and 7-day Rolling Average Trend Lines**
St. Lucie County, Florida
(Provisional Data)



*On 8/31 there was a one-time data submission to all counties in Florida, including St. Lucie. This data submission had a negligible effect on data trends.

Mission:

To protect, promote & improve the health of all people in Florida through integrated state, county & community efforts.



Ron DeSantis
Governor

Scott A. Rivkees, MD
State Surgeon General

Vision: To be the Healthiest State in the Nation

Cumulative Age Distribution, Hospitalizations and Death Data for St. Lucie County

Age group	All cases	New cases (10/15)		Hospitalizations		Deaths	
0-4 years	154	0	0%	4	1%	0	0%
5-14 years	377	1	3%	4	1%	0	0%
15-24 years	1,131	8	23%	13	2%	1	0%
25-34 years	1,385	4	11%	37	5%	3	1%
35-44 years	1,357	4	11%	50	7%	3	1%
45-54 years	1,335	5	14%	85	12%	10	3%
55-64 years	1,164	4	11%	124	17%	30	10%
65-74 years	802	9	26%	160	22%	71	23%
75-84 years	472	0	0%	138	19%	83	26%
85+ years	314	0	0%	117	16%	114	36%
Unknown	1	0	0%	0	0%	0	0%
Total	8,492	35		732		315	

Hospitalization counts include anyone who was hospitalized at some point during their illness. It does not reflect the number of people currently hospitalized.

Current Testing Activity:

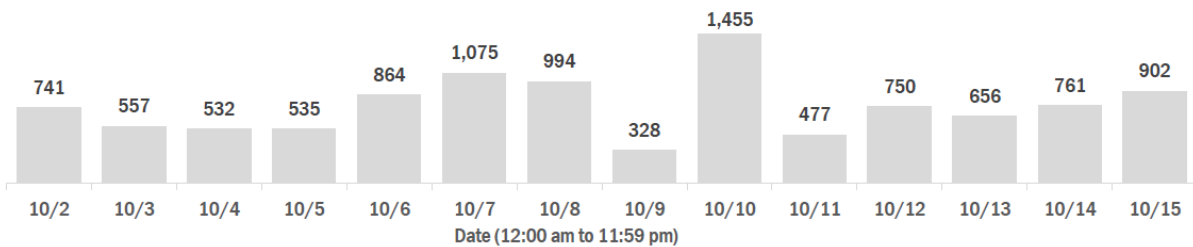
The table below shows the daily number and percent of COVID-19 positive labs for St. Lucie County from 10/2-10/15. Over the past 14 days the average positivity rate was 3.43% with an average of 786 tests daily and an average of 27 cases daily.

Data in this report are provisional and subject to change.

Laboratory testing for Florida residents over the past 2 weeks

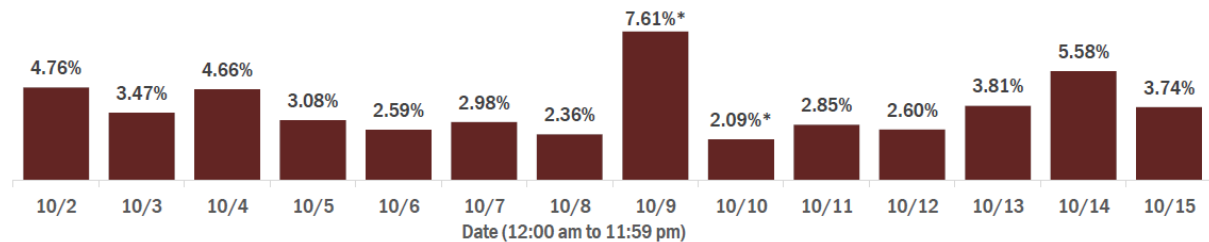
Number of Florida residents who tested negative per day

These counts include the number of people for whom the Department received negative PCR or antigen laboratory results by day. People who tested negative on multiple days will be included once for each day they are tested. Negative results for persons who have previously tested positive are excluded.



Percent positivity for new cases in Florida residents

These counts include the number of Florida residents for whom the department received PCR or antigen laboratory results by day. This percent is the number of people who test positive for the first time divided by all the people tested that day, excluding people who have previously tested positive.



* A data dump of previously reported lab results prevented the reporting system from normal processing of lab results on Oct 9, causing an inaccurate representation of data for Oct 9 and 10. The most accurate way to interpret percent positivity for these 2 days is as a 2-day average, which was 3.15%

Mission:

To protect, promote & improve the health of all people in Florida through integrated state, county & community efforts.



Ron DeSantis
Governor

Scott A. Rivkees, MD
State Surgeon General

Vision: To be the **Healthiest State** in the Nation

Why is Testing and knowing your COVID status so important?

- 1) **Protecting Yours:** If you know you are currently infected with COVID you can protect your family, friends and community by isolating yourself and reduce the spread of COVID.
- 2) **Medical Help Early:** If you or other family members are ill, you can get the help you need medically to prevent the potential negative consequences of COVID, such as severe illness or death.
- 3) **Helping to Prevent COVID:** Knowing how many people have COVID tell us how well we are containing the COVID virus by using Masks, Social Distancing and Personal Hygiene.

Testing Sites in St. Lucie County

We are now maintaining a spreadsheet of local COVID testing sites in St. Lucie County. The detailed list will be updated weekly and includes the location, address, hours of operation, type of test, cost, and a phone number if needed. The list is available here:

<https://www.stlucieco.gov/home/showdocument?id=7832>

COVID-19 Testing Bus Coming to St. Lucie: 9:00 AM- 4:00 PM on each of these dates:

1. October 23: Sandhill Crane Park, 2355 SE Scenic Park Drive, Port St. Lucie
2. October 24: Whispering Pines Park, 800 SW Darwin Blvd., Port St. Lucie
3. October 25: Percy Peek Gymnasium, 2902 Avenue D, Fort Pierce
4. October 26: Ilous Ellis Park parking lot, at the corner of North 13th Street and Avenue O. The address for the park is 1211 Avenue M, but when you GOOGLE it, it displays a house.



COVID-19 Rapid Point-Of-Care Test Distribution

The U.S. Department of Health and Human Services (HHS), in partnership with the Department of Defense (DOD), is providing rapid point-of-care tests to communities across the US in an effort to trace, contain, and combat the spread of COVID-19.

Mission:

To protect, promote & improve the health of all people in Florida through integrated state, county & community efforts.



Ron DeSantis
Governor

Scott A. Rivkees, MD
State Surgeon General

Vision: To be the **Healthiest State** in the Nation

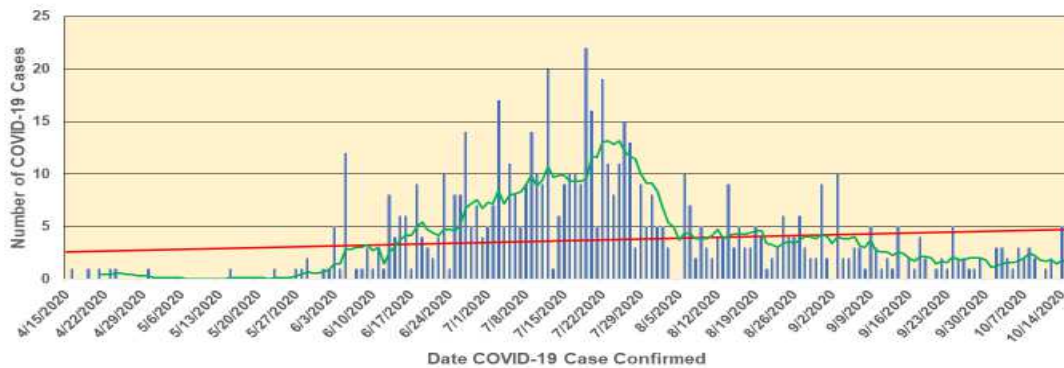
HHS is distributing [150 million rapid, Abbott BinaxNOW™ COVID-19 tests](#) to expand strategic, evidence-based testing in the United States. Florida and other States will receive these point-of care tests for vulnerable populations to rapidly identify and isolate those who are potentially infectious to others, such as schools, adult congregate living facilities, nursing homes, etc.

Binaxnow Fact sheet:

<https://www.hhs.gov/sites/default/files/abbott-binaxnow-fact-sheet.pdf>

COVID-19 Impact on St. Lucie Children so far:

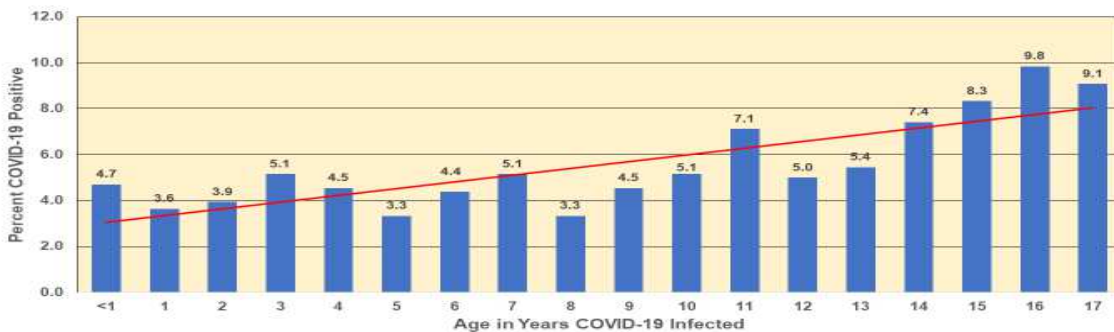
***Cumulative Cases of COVID-19 in Children <18 Years Old by Year of Age with Linear and 7-day Rolling Average Trend Lines
St. Lucie County, Florida
(Provisional Data)**



*On 8/31 there was a one-time data submission to all counties in Florida, including St. Lucie. This data submission had a negligible effect on data trends

Cases of COVID-19 in children were rare and sporadic until mid-June. Most cases occurred in July and early August. Since then numbers have been decreasing and are at low levels and have remained so through September and into October.

**Cumulative Percent of Children Infected with COVID-19 by Year of Age with Linear Trend Line
St. Lucie County, Florida
(Provisional Data)**



The St. Lucie age-distribution is similar to State and National trends. As the age goes up so do the numbers of children infected. Infants under one year of age are more at risk for COVID-19 as well.

Mission:

To protect, promote & improve the health of all people in Florida through integrated state, county & community efforts.



Ron DeSantis
Governor

Scott A. Rivkees, MD
State Surgeon General

Vision: To be the **Healthiest State** in the Nation

Children under 10 years have been noted to experience fewer symptoms and if infected they do not appear to be efficient transmitters of COVID-19 (CDC).

To Learn more about trends in the clinical presentation of COVID-19 in Children:

<https://www.ncbi.nlm.nih.gov/research/coronavirus/publication/32942286>

School Children: Below is a daily and cumulative report of the status of St. Lucie County Children and Staff attending school in person.

Current Status: Is what is happening on the current day.

Positives are COVID-19 confirmed cases

Probable's are contact to COVID-19 Confirmed cases who became symptomatic in the quarantine period and are treated in the same way that Positives are.

Exposed are contact to either confirmed or probable cases

Recovered/Return to School: These were COVID-19 **Positive, Probable or Exposed**, that completed monitoring and have returned to school as students or staff.

Daily Update from Friday, October 16, 2020

Current Status						Recovered/Return To School					
Students			Staff			Student			Staff		
Positive	Probable	Exposed	Positive	Probable	Exposed	Positive	Probable	Exposed	Positive	Probable	Exposed
29	11	136	20	8	55	27	3	1,082	26	2	160

Current Status of Schools in Florida: Summary of COVID-10 Cases associated with Primary and Secondary Schools (Data through October 10, 2020)

http://ww11.doh.state.fl.us/comm/partners/covid19_report_archive/school-reports/schools_latest.pdf

Routine vaccinations more important than ever and are required. Becoming infected with vaccine preventable diseases such as Influenza and COVID-19 can cause more severe disease. You will find the Immunization Schedule here: <http://www.floridahealth.gov/programs-and-services/immunization/children-and-adolescents/school-immunization-requirements/index.html>

Mission:

To protect, promote & improve the health of all people in Florida through integrated state, county & community efforts.



Ron DeSantis
Governor

Scott A. Rivkees, MD
State Surgeon General

Vision: To be the **Healthiest State** in the Nation

Influenza and COVID-19

International:

- **Southern Hemisphere:** While the Northern hemisphere will begin into “Flu Season” in early October with COVID-19 circulating, our neighbors in the Southern Hemisphere have experienced both COVID-19 and Influenza simultaneously during their winter (our summer). The World Health Organization, Pan-American Health Association and the CDC have noted that the “Flu Season” was very mild this year. **They have credited the control measures in place for COVID-19 as likely reasons for the decrease in case of Influenza. Meaning the social distancing, mask/face covering, and hygiene practices not only help with COVID-19 but very likely with Influenza.**

Decreased Influenza Activity During the COVID-19 Pandemic — United States, Australia, Chile, and South Africa, 2020

<https://www.cdc.gov/mmwr/volumes/69/wr/mm6937a6.htm>

National Influenza Surveillance

- Here you will find the Weekly U.S. Influenza Surveillance Report-**FLUVIEW** (bookmark for updates) <https://www.cdc.gov/flu/weekly/index.htm>

State Influenza Surveillance

- Here you will find the Florida Flu Review: (bookmark for updates) <http://www.floridahealth.gov/diseases-and-conditions/influenza/documents/2020-w35-36-flu-review.pdf>

St. Lucie County Influenza and COVID-19 Surveillance System

St. Lucie’s Surveillance system is designed to detect cases of Influenza and COVID-19 early in the stage of a person’s illness and throughout the course of the illness. It is time-staged to collect information for early detection and increases in Influenza in the community. Below you will find a graph that demonstrates how the surveillance system works:

Mission:

To protect, promote & improve the health of all people in Florida through integrated state, county & community efforts.



Ron DeSantis
Governor

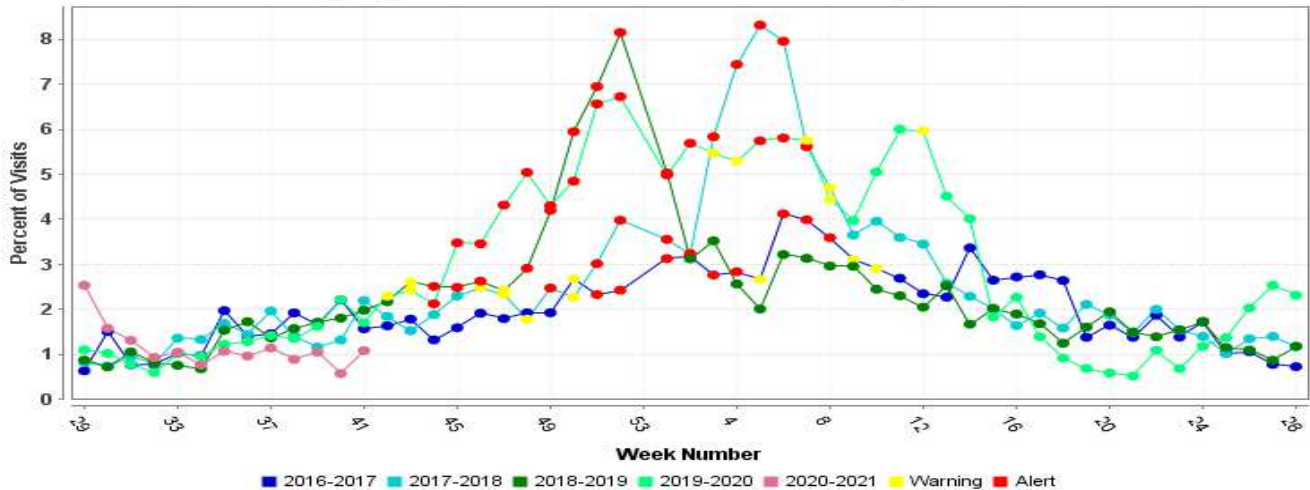
Scott A. Rivkees, MD
State Surgeon General

Vision: To be the Healthiest State in the Nation

Components of St. Lucie's COVID-19 and Influenza Surveillance System

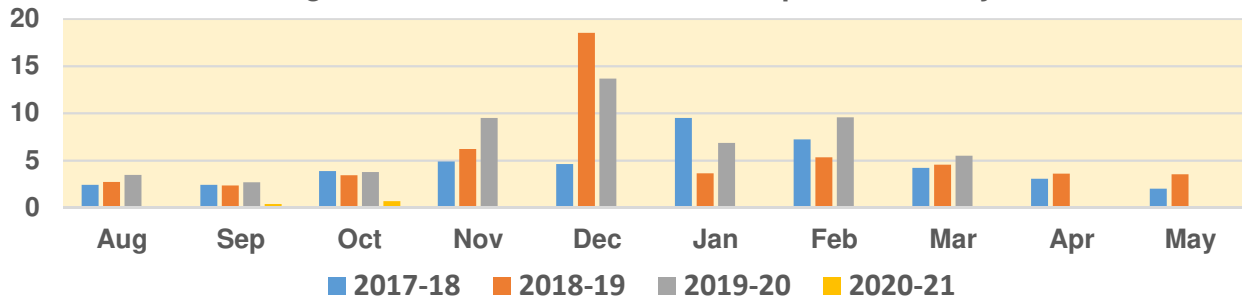
This graph represents the Emergency Department Data Reflecting 5-years of Data from ESSENCE. The graph shows low rates of Influenza-Like activity currently, Influenza season officially begins Week (Week 40) or early October. Currently we are in Week 41 of the year.

Percent of Emergency Room Visits for Influenza-Like Illness by Week of Visit 2016-2020



Monitoring Absentee Rates for early signs of Influenza or COVID-19 Illness in Schools:

Average # Students Sent Home With ILI per School Day Last 3 Years



Comparison of Clinical Features of COVID-19 vs Seasonal Influenza A and B in US Children

https://jamanetwork.com/journals/jamanetworkopen/fullarticle/2770250?utm_source=silverchair&utm_campaign=jama_network&utm_content=covid_weekly_highlights&utm_medium=email

We are now maintaining a spreadsheet of local influenza testing sites in St. Lucie County.

<https://www.stlucieco.gov/Home/ShowDocument?id=7911>

Flu & Young Children - <https://www.cdc.gov/flu/highrisk/children.htm>

What Happens When COVID-19 Collides with Flu Season?

<https://jamanetwork.com/journals/jama/fullarticle/2769835>

Mission:

To protect, promote & improve the health of all people in Florida through integrated state, county & community efforts.



Ron DeSantis
Governor

Scott A. Rivkees, MD
State Surgeon General

Vision: To be the **Healthiest State** in the Nation

Influenza Vaccine

Influenza vaccine can provide protection from Influenza entirely, lessen the severity of the illness and lessen the length of influenza illness. Influenza vaccination is strongly advised by WHO, the CDC the Advisory Council on Immunization Practices (ACIP) and numerous other health organizations. It is especially important to be vaccinated now, as we have COVID-19 circulating in the community. **Co-infection with both Influenza and COVID-19 is possible.**

Children over the age of 6 months should receive the influenza vaccine. In the past, children have been very effective spreaders of influenza through school attendance. Not only do they become ill, but they are very likely to take the virus home with them and infect others in their household. This is especially concerning if there are persons in the home who are pregnant, with chronic diseases, the elderly or both.

Why is it important to get an Influenza Vaccine this year, especially?

The concurrent outbreak of COVID-19 and Influenza can **stretch hospital and medical resources** beyond current limits. Personnel, Personal Protective Equipment and supplies are already limited in some areas. In St. Lucie County, there are no shortages however, the impact of both Influenza and COVID-19 hospitalizations could change that.

Who is at high risk of Influenza complications and should be vaccinated?

- All persons without a contraindication should be vaccinated due to the potential for infection with both COVID-19 and Influenza.
- All children aged 6 through 59 months;
- All persons aged ≥ 50 years;
- Adults and children who have chronic pulmonary (including asthma), cardiovascular (excluding isolated hypertension), renal, hepatic, neurologic, hematologic, or metabolic disorders (including diabetes mellitus);
- Persons who are immunocompromised due to any cause (including but not limited to immunosuppression caused by medications or human immunodeficiency virus [HIV] infection);
- Women who are or will be pregnant during the influenza season;
- Children and adolescents (aged 6 months through 18 years) who are receiving aspirin- or salicylate-containing medications and who might be at risk for experiencing Reye syndrome after influenza virus infection;
- Residents of nursing homes and other long-term care facilities;
- American Indians/Alaska Natives; and
- Persons who are extremely obese (body mass index ≥ 40 for adults).
- Persons Who Live with or Care for Persons at Higher Risk for Influenza

When is the best time to be vaccinated?

The Centers for Disease Control and Prevention recommend that you get your influenza vaccine now in order to have time to build immunity against Influenza. Peak Influenza season tends to be in January but there are been seasons where early and late transmission of influenza has happened.

Mission:

To protect, promote & improve the health of all people in Florida through integrated state, county & community efforts.



Ron DeSantis
Governor

Scott A. Rivkees, MD
State Surgeon General

Vision: To be the **Healthiest State** in the Nation

How effective is the Influenza vaccine at reducing influenza?

Vaccine effectiveness can vary but, the CDC states that, “recent studies show that the vaccination reduces the risk of flu by between 40-60% among the overall population...”, when the vaccine is well matched to the viruses circulating. The vaccine tends to work better against some strains of flu than others.

https://jamanetwork.com/journals/jama/fullarticle/2771510?utm_source=silverchair&utm_medium=email&utm_campaign=article_alert-jama&utm_term=mostread&utm_content=ol-widget_10072020

Prevention and Control of Seasonal Influenza with Vaccines: Recommendations of the Advisory Committee on Immunization Practices — United States, 2020–21 Influenza Season

https://www.cdc.gov/mmwr/volumes/69/rr/rr6908a1.htm?s_cid=rr6908a1_w
https://jamanetwork.com/journals/jama/fullarticle/2771510?utm_source=silverchair&utm_medium=email&utm_campaign=article_alert-jama&utm_term=mostread&utm_content=ol-widget_10072020

To find a place to get your flu shot in St. Lucie County

<https://www.stlucieco.gov/Home/ShowDocument?id=7911>

COVID-19 is currently circulating in St. Lucie County. COVID-19 is not just a “bad flu”, it is more contagious, has a higher death rate than influenza and can cause long-term health concerns. Humans have never been infected with this virus and we have no immunity to it.

Primary symptoms of COVID-19 are fever, cough and shortness of breath. ***Symptoms of COVID-19 are often like Influenza.*** Symptoms may appear in as few as two days or as many as 14 days following exposure. The elderly and those with underlying medical problems like high blood pressure, heart problems and diabetes are more likely to develop serious illness. There is currently no vaccine to prevent COVID-19 but several vaccines are being developed. Current evidence indicates that COVID-19 causes milder symptoms in younger people and children and they are less infectious to others as originally thought.

The best way to prevent illness is to avoid being exposed to the virus. The Health Department recommends:

- Using a mask or face covering in public to protect others should you be asymptomatic yet infectious to others. (asymptomatic infections have been associated with COVID transmission)
- Maintain 6 feet between you and others-close proximity to infected people increases your chances of contracting COVID-19.
- Avoiding close contact with people who are sick;
- Staying home when you are sick and avoiding contact with persons in poor health;
- Avoiding touching your eyes, nose and mouth with unwashed hands;
- Covering your cough or sneezing into a tissue, then disposing of the tissue;
- Washing your hands often with soap and water for at least 20 seconds, especially after going to the bathroom, before eating, after blowing your nose, coughing or sneezing;
- If soap and water are not readily available, use an alcohol-based hand sanitizer with at least 60% alcohol. Disinfecting frequently touched objects and surfaces using a regular household cleaning spray or wipe.

Mission:

To protect, promote & improve the health of all people in Florida through integrated state, county & community efforts.



Ron DeSantis
Governor

Scott A. Rivkees, MD
State Surgeon General

Vision: To be the **Healthiest State** in the Nation

COVID-19 Vaccine and Therapeutics

Vaccines:

Florida Department of Health has recently convened a statewide planning group to help develop a statewide strategy for the release of one or more vaccines for COVID-19 in late 2020 and early 2021. There are multiple vaccines currently in Phase 3 trials so the strategies being developed must address all possible situations including the need for two vaccinations, maintaining ultra-cold chain, rapid administration, data entry and reporting. Local county health departments will be reviewing their mass vaccination plans and are awaiting further guidance from the state. This planning effort has just begun, but we will keep you informed as the planning continues. **We will look to you, our partners, to assist us with this important vaccination initiative.**

Below are the promising vaccines in Phase 3 Trials:

Moderna:

- Phase 1 studies published in the NEJM suggests that the vaccine is safe and elicits higher levels of SARS-CoV2 antibodies than infection with the virus.
- Phase 3 underway – To complete Clinical Trials it may take until the end of 2020 or early 2021
- Two doses 28 days apart

Pfizer – BioTech – Fosun Pharma:

- Two doses 21 days apart
- Currently in Phase 2/3 – they said they may know as soon as next month
- If approved, they expect to manufacture over 1.3 billion doses of their vaccine worldwide by the end of 2021

AstraZeneca-Oxford Vaccine:

- Two doses 28 days apart.
- Phase 2/3 in UK and India and Phase 3 in the US and S. Africa
- UK also testing an inhaled form in the early stages
- Two participants with other neurological symptoms similar to transverse myelitis halted the study in the UK but later resumed

Johnson and Johnson – Janssen’s Vaccine:

- Single dose vaccine
- Just launched Phase 3

Vaccines and Related Biological Products Advisory Committee October 22, 2020 Meeting

<https://www.fda.gov/advisory-committees/advisory-committee-calendar/vaccines-and-related-biological-products-advisory-committee-october-22-2020-meeting-announcement>

To learn more about COVID-19 Vaccine Approval and the FDA

https://www.youtube.com/watch?v=TfI8mWvRprk&feature=youtu.be?utm_source=silverchair&utm_medium=email&utm_campaign=article_alert-jama&utm_content=olf&utm_term=091820

Mission:

To protect, promote & improve the health of all people in Florida through integrated state, county & community efforts.



Ron DeSantis
Governor

Scott A. Rivkees, MD
State Surgeon General

Vision: To be the **Healthiest State** in the Nation

To get an update of the status of vaccine development and trials, you can follow this link to a Vaccine Tracker website: <https://www.nytimes.com/interactive/2020/science/coronavirus-vaccine-tracker.html>

COVID-19 Vaccination Program Interim Playbook for Jurisdiction Operations
<https://www.cdc.gov/vaccines/imz-managers/downloads/COVID-19-Vaccination-Program-Interim-Playbook.pdf>

COVID-19 TREATMENT AND VACCINE TRACKER
<https://covid-19tracker.milkeninstitute.org/>

Clinical Trials for COVID-19
<https://clinicaltrials.gov/ct2/results?cond=COVID-19>

Hot Topics

Framework for the Equitable Distribution of COVID-19 Vaccine

https://www.nap.edu/catalog/25917/framework-for-equitable-allocation-of-covid-19-vaccine?utm_source=NASEM+News+and+Publications&utm_campaign=106bf1038a-NAP_mail_new_2020_10_05&utm_medium=email&utm_term=0_96101de015-106bf1038a-111157114&goal=0_96101de015-106bf1038a-111157114&mc_cid=106bf1038a&mc_eid=02cd9fbf43

COVID-19 Is Now the Third Leading Cause of Death in the U.S.

<https://www.scientificamerican.com/article/covid-19-is-now-the-third-leading-cause-of-death-in-the-u-s1/>

Large Meta-analysis Digs Into Obesity's COVID-19 Risks

https://jamanetwork.com/journals/jama/fullarticle/2772071?guestAccessKey=d7daaba9-2837-4a71-a7bb-5908969d8d5f&utm_source=silverchair&utm_medium=email&utm_campaign=article_alert-jama&utm_content=olf&utm_term=101520

An Outbreak of COVID-19 Associated with a Recreational Hockey Game — Florida, June 2020

https://www.cdc.gov/mmwr/volumes/69/wr/mm6941a4.htm?s_cid=mm6941a4_e&ACSTrackingID=USCDC_921-DM40428&ACSTrackingLabel=This%20Week%20in%20MMWR%20-%20Vol.%2069%2C%20October%2016%2C%202020&deliveryName=USCDC_921-DM40428

Association of Vitamin D Status and Other Clinical Characteristics With COVID-19 Test Results

https://jamanetwork.com/journals/jamanetworkopen/fullarticle/2770157?utm_source=silverchair&utm_medium=email&utm_campaign=article_alert-jamanetworkopen&utm_term=mostread&utm_content=olf-widget_10142020

Excess Deaths From COVID-19 and Other Causes, March-July 2020

https://jamanetwork.com/journals/jama/fullarticle/2771761?guestAccessKey=cf259537-7710-44b6-84b1-50becdae03a6&utm_source=silverchair&utm_medium=email&utm_campaign=article_alert-jama&utm_term=mostread&utm_content=olf-widget_10142020