

ABBREVIATIONS: (SOME MAY NOT BE USED)

Table with 4 columns: ABBREVIATION, DESCRIPTION, ABBREVIATION, DESCRIPTION. Lists various plumbing and electrical symbols and their meanings.

PLUMBING LEGEND (SOME MAY NOT BE USED)

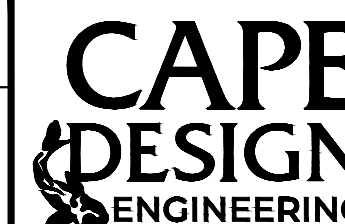
Table with 3 columns: SYMBOL, DESCRIPTION, ABBREVIATION. Lists plumbing symbols and their corresponding descriptions.

GENERAL NOTES:

- List of 28 general notes regarding materials, fabrication, coordination, and installation requirements for the plumbing system.

PLUMBING SUBMITTALS table with columns for ITEM, PRODUCT DATA, SHOP DRAWINGS, TEST REPORTS, COORDINATION DRAWINGS, WIRING DIAGRAMS, and O & M MANUAL.

NOTES: (1) FOR REVIEW (2) FOR RECORD



2725 Center Place Melbourne, FL 32940 321.799.2970 | www.capeco.com Registry #072

Revision table with columns: DATE, DESCRIPTION, REV.

COACH FENN PARK IMPROVEMENT 2806 AVE L, FORT PIERCE, FLORIDA 34950 CITY OF FORT PIERCE PLUMBING ABBREVIATIONS, LEGEND AND NOTES

BY ANY PROFESSIONAL, A DESIGN AND THE BEST OF MY KNOWLEDGE AND BELIEF, THESE PLANS AND SPECIFICATIONS COMPLY WITH THE FLORIDA BUILDING CODE 2023.

PRINTED COPIES OF THIS DOCUMENT ARE NOT CONSIDERED BOUND AND SEALED AND THE SIGNATURE MUST BE VERIFIED ON ANY ELECTRONIC COPIES.

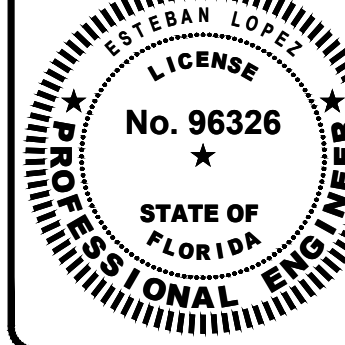
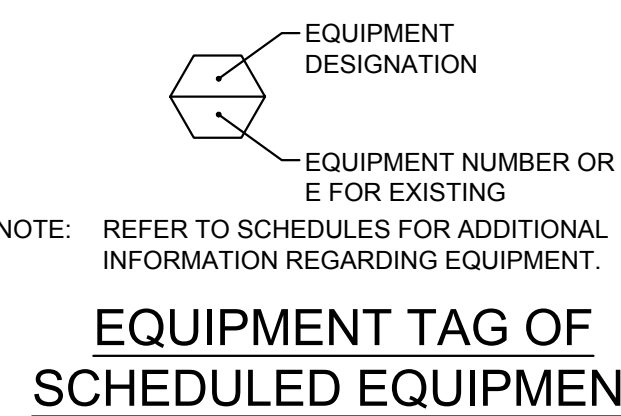
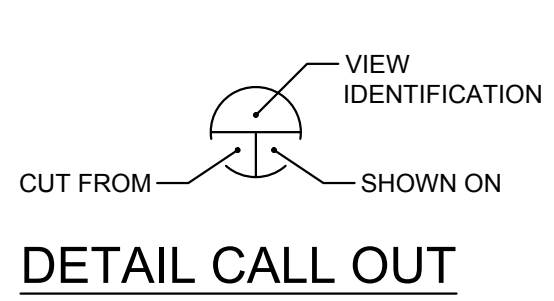
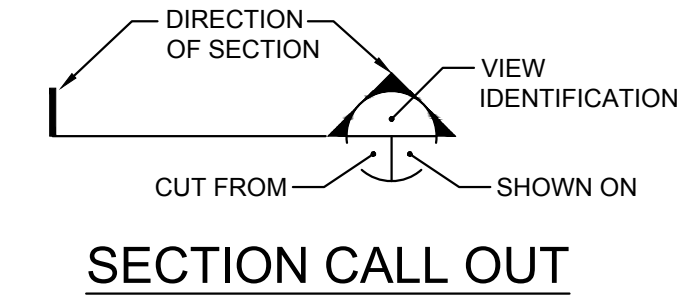
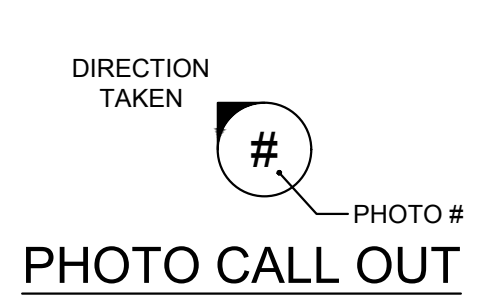


Table with columns: CODE #, DATE, DRAWN, DESIGN, CHECK, FILE. Contains project metadata.

P-001



X:\Projects\60263 - City_of_Ft_Pierce_Coat_Services\0002_Coach_Fenn_Park\2_CAD\1 - 60263\Sheets\001.dwg 1/15/2026 8:47:46 AM

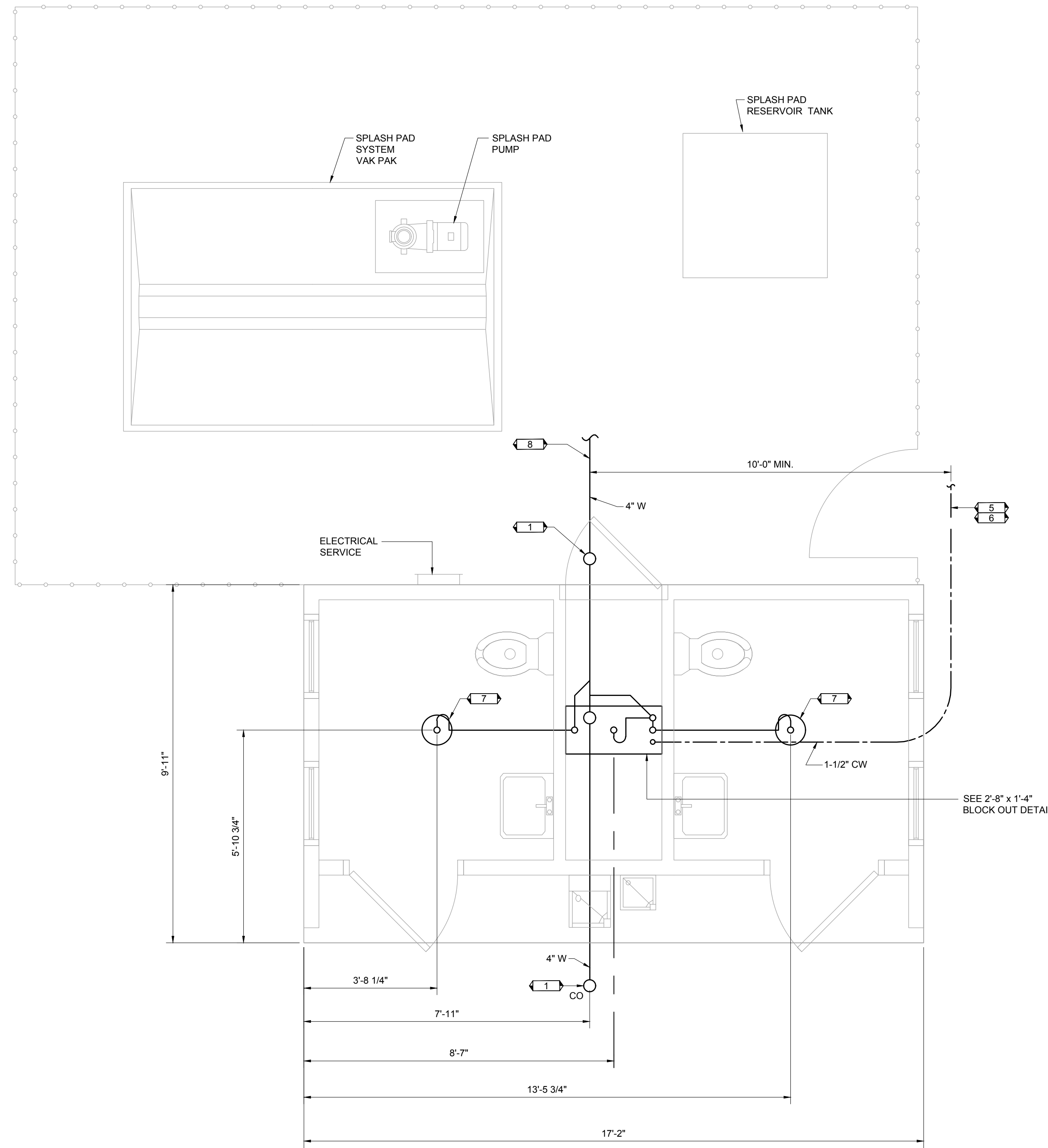
1 | 2 | 3 | 4 | 5

D

C

B

A

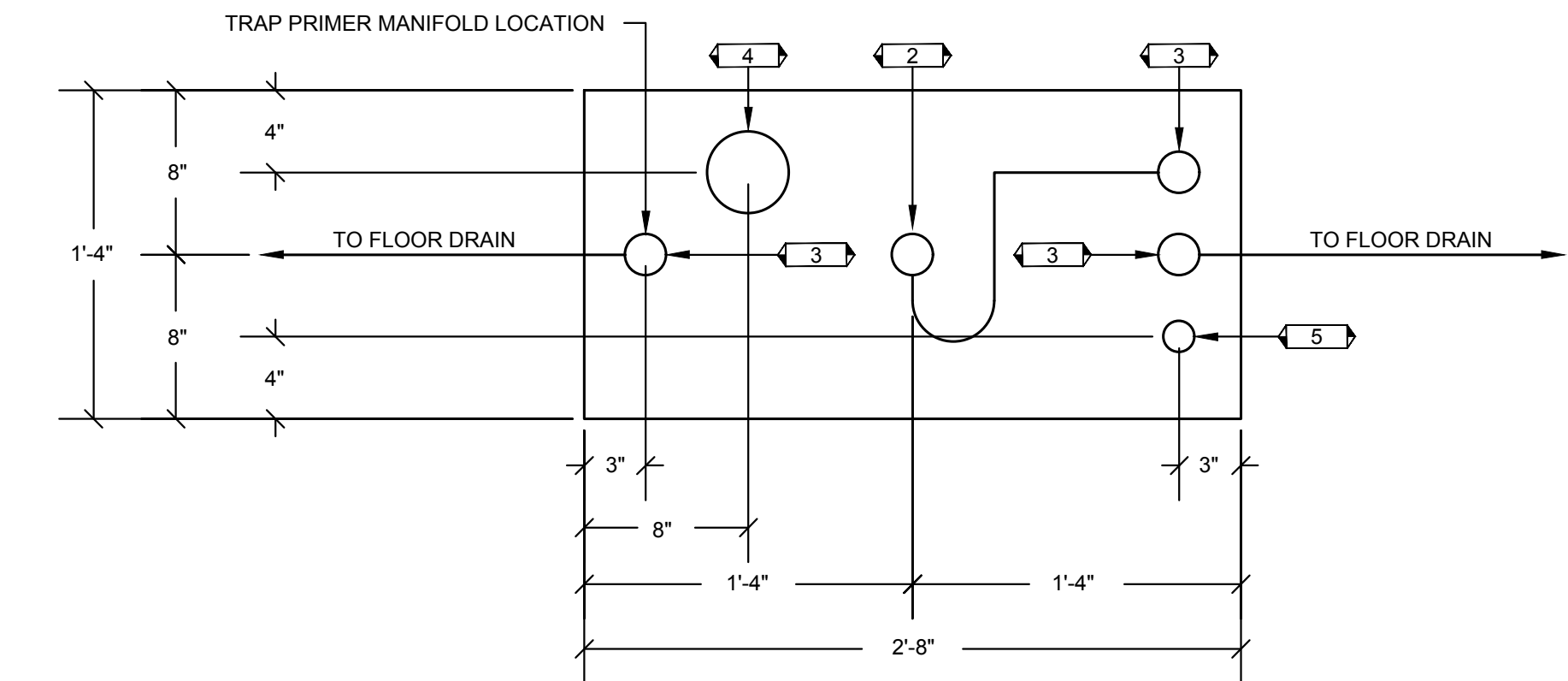


PIPING LEGEND:

- BELOW FLOOR VENT PIPING
SCH 40 ABS
TYPE DWV
- BELOW FLOOR PIPING
WASTE PIPING
SCH 40 ABS
TYPE DWV
- 1-1/2" TYPE "K" ANNEALED "SOFT" COPPER WATER SERVICE

KEY NOTES:

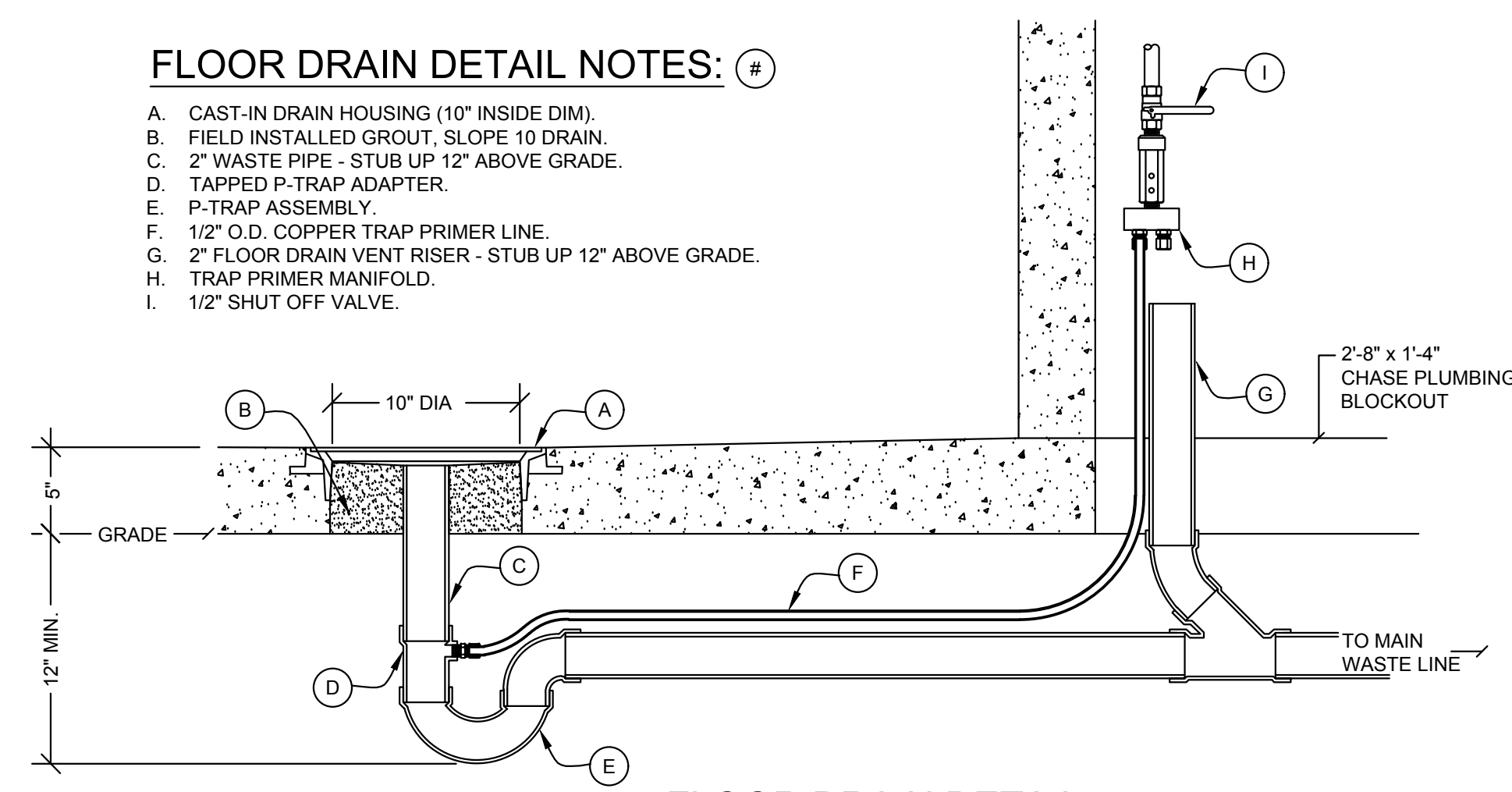
1. 4" CLEAN OUT TO GRADE.
2. 2" FLOOR DRAIN. FIELD INSTALLED TRAP PRIMER SYSTEM IF REQUIRED BY CITY OF FORT PIERCE. (2'-8" x 1'-4" BLOCKOUT)
3. 2" VENT PIPES EXTENDED 12" ABOVE FINISHED FLOOR LEVEL. PROVIDE TEST PLUG. (2'-8" x 1'-4" BLOCKOUT)
4. 4" WASTE PIPE EXTENDED 12" ABOVE FINISHED FLOOR LEVEL. PROVIDE TEST PLUG. (2'-8" x 1'-4" BLOCKOUT)
5. 1-1/2" TYPE K ANNEALED "SOFT" COPPER WATER SERVICE EXTENDED 12" ABOVE FINISHED FLOOR LEVEL. PROVIDE CAP AT END. (2'-8" x 1'-4" BLOCKOUT)
6. MIN. BURY PER LOCAL REQUIREMENTS TO PROTECT AGAINST FREEZING AND DAMAGE.
7. 2" FLOOR DRAIN. FIELD INSTALLED TRAP PRIMER SYSTEM IF REQUIRED BY CITY OF FORT PIERCE. (10" DIA BLOCKOUT)
8. 30" MIN. BURY, PROVIDE TRACER TAPE.



2'-8" x 1'-4" BLOCKOUT DETAIL
1-1/2" = 1'-0"

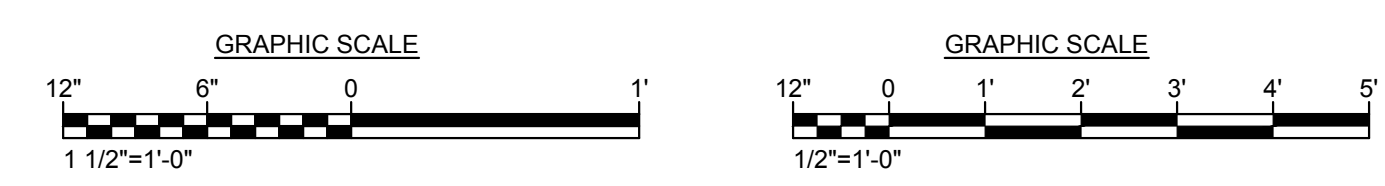
FLOOR DRAIN DETAIL NOTES:

- A. CAST-IN DRAIN HOUSING (10" INSIDE DIM).
- B. FIELD INSTALLED GROUT. SLOPE 10 DRAIN.
- C. 2" WASTE PIPE - STUB UP 12" ABOVE GRADE.
- D. TAPPED P-TRAP ADAPTER.
- E. P-TRAP ASSEMBLY.
- F. 1/2" O.D. COPPER TRAP PRIMER LINE.
- G. 2" FLOOR DRAIN VENT RISER - STUB UP 12" ABOVE GRADE.
- H. TRAP PRIMER MANIFOLD.
- I. 1/2" SHUT OFF VALVE.



FLOOR DRAIN DETAIL
N.T.S.

PLUMBING PLAN
1/2" = 1'-0"



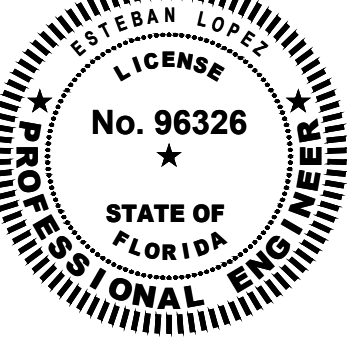
REV	DESCRIPTION	DATE

COACH FENN PARK IMPROVEMENT
2806 AVE L, FORT PIERCE, FLORIDA 34950
CITY OF FORT PIERCE

PLUMBING PLAN

AS A PROFESSIONAL ENGINEER AND THE BEST OF MY KNOWLEDGE AND BELIEF, THESE PLANS AND SPECIFICATIONS COMPLY WITH THE FLORIDA BUILDING CODE 2023.

PRINTED COPIES OF THIS DOCUMENT ARE NOT CONSIDERED BOUND AND SEALED AND THE SIGNATURE MUST BE VERIFIED ON ANY ELECTRONIC COPIES.



CDE #	160263
DATE	01/16/2026
DRAWN	L. BECK
DESIGN	E. LOPEZ
CHECK	M. CHARMBURY
FILE	P-101.dwg

P-101

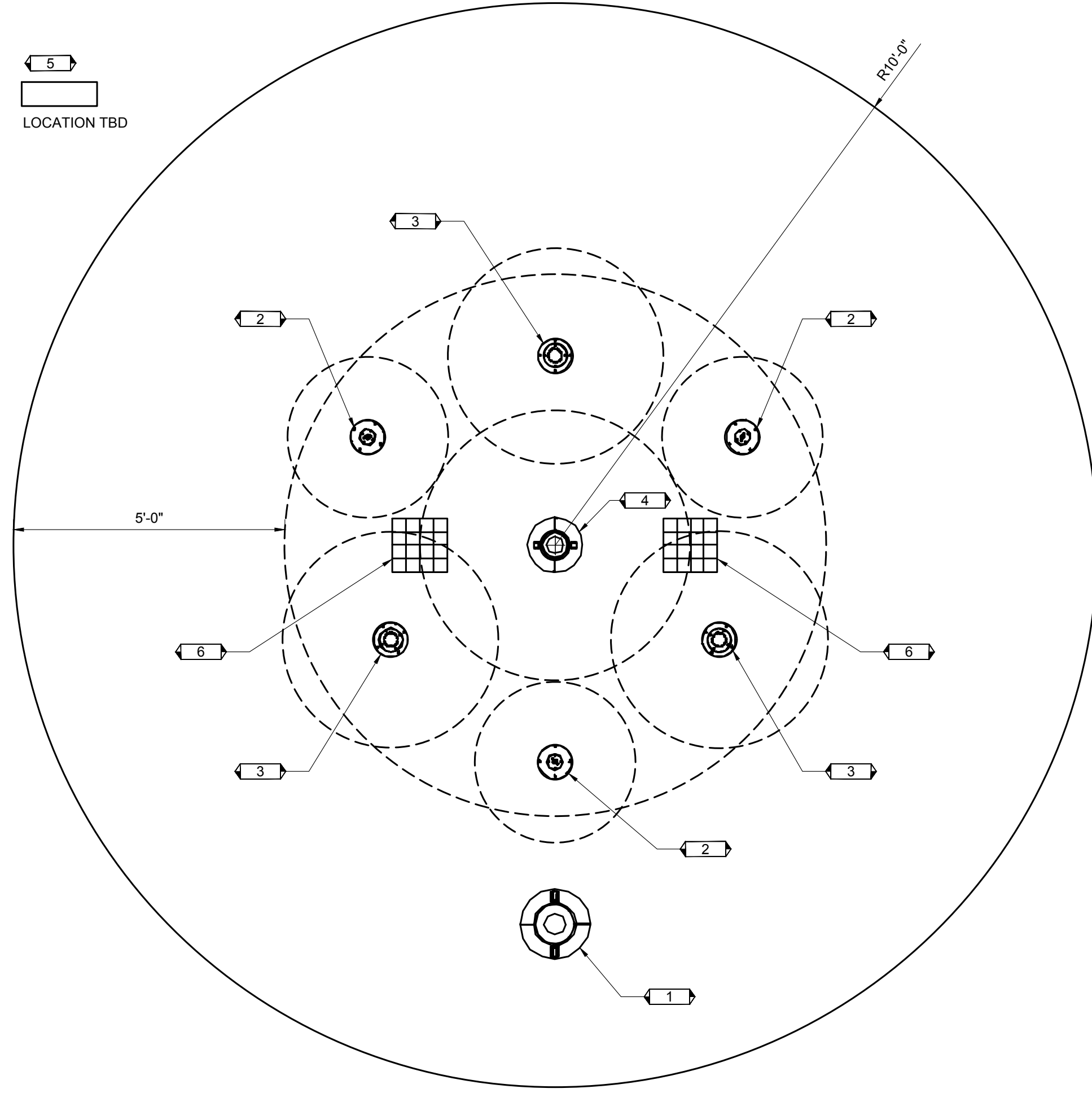
X:\Projects\60263 - City of Ft Pierce - Cont Services\0002_Coach Fenn Park\02_CAD\1 - 60263\Sheets\P-101.dwg 1/15/2026 8:47:53 AM Printed By: Lance Beck

GENERAL NOTES:

1. CONTRACTOR RESPONSIBLE FOR ALL PVC PIPING INCLUDING FLANGES, ELBOWS, GASKETS AND HARDWARE TO CONNECT ALL ABOVE EQUIPMENT TO OPERATE PROPERLY AND IN COMPLIANCE WITH LOCAL PLUMBING REGULATIONS.
2. 2% GRADE SLOPED FROM PERIMETER TO MAIN DRAIN FRAMES.
3. 5FT BUFFER ZONE FROM PERIMETER IS CALCULATED.
4. DASHED LINES INDICATE AREA OF INFLUENCE.

KEY NOTES: #

1. STAINLESS LED TOUCH BOLLARD
2. (3) LOW FLOW UPSTREAM JET OM
3. (3) LOW FLOW MINI POPKORN JET OM
4. STAINLESS LOW FLOW BELLE SPRAY JET OM
5. STAINLESS ENCLOSURE WITH MANIFOLD, 2" PRV, SOLENOIDS, BALL VALVES, RAIN MAKER CONTROL.
6. (2) 12 x 12 DRAIN BASIN



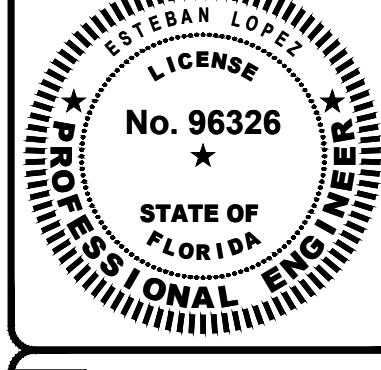
SPLASH PAD LAYOUT PLAN
 1/2" = 1'-0"

REV	DESCRIPTION	DATE

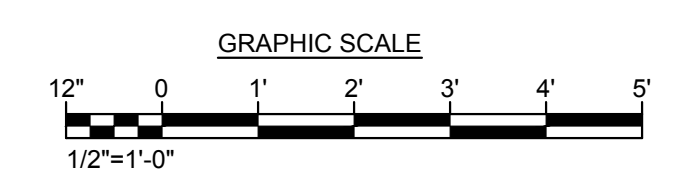
COACH FENN PARK IMPROVEMENT
 2306 AVE L, FORT PIERCE, FLORIDA 34950
 CITY OF FORT PIERCE

SPLASH PAD LAYOUT PLAN

AS MY PROFESSIONAL JUDGMENT AND THE BEST OF MY KNOWLEDGE AND BELIEF, THESE PLANS AND SPECIFICATIONS COMPLY WITH THE FLORIDA BUILDING CODE 2023.
 PRINTED COPIES OF THIS DOCUMENT ARE NOT CONSIDERED BOUND AND SEALED AND THE SIGNATURE MUST BE VERIFIED ON ANY ELECTRONIC COPIES.



CDE #	160263
DATE	01/16/2026
DRAWN	L. BECK
DESIGN	E. LOPEZ
CHECK	M. CHARMBURY
FILE	P-102.dwg



X:\Projects\60263 - City_of_Ft_Pierce_Coat_Services\0002_Coach_Fenn_Park\02_L_CAD\1 - 60263\Sheets\P-102.dwg 1/15/2026 8:47:55 AM

D
C
B
A