


SECOND FLOOR  NORTH

SYMBOL LEGEND			
SYMBOL	DESCRIPTION	MANUFACTURER	PART NUMBER
PANELS			
	CONTROL PANEL	SIMPLEXGRINNELL	4010-9101
	BACK BOX, BEIGE	SIMPLEXGRINNELL	2975-9423
	BATTERY 18AH	SIMPLEXGRINNELL	2081-9275
	LCD ANNUNCIATOR	SIMPLEXGRINNELL	4606-9101
	VOICE CONTROL PANEL	SIMPLEXGRINNELL	4003-9001
	BATTERY 6.2AH	SIMPLEXGRINNELL	2081-9272
	NAC EXTENDER 120VAC, IDNET	SIMPLEXGRINNELL	4009-9201
	BATTERY 6.2AH	SIMPLEXGRINNELL	2081-9272
AUDIBLE/VISUAL: AUDIBLE & VISUAL ONLY			
	WP 5/V 24VDC RED	WHELOCK	MTWP-2475W-FR
	S/V 24VDC 75CD RED 25/70V	SIMPLEXGRINNELL	4903-9357
	S/V 24VDC 110CD RED 25/70V	SIMPLEXGRINNELL	4903-9358
	STROBE 75CD RED	SIMPLEXGRINNELL	4904-9169
	S#-H	STROBE CIRCUIT-DEVICE COUNT	
	SP#-H	SPEAKER CIRCUIT-DEVICE COUNT	
INITIATION			
	PULL STATION IDNET PUSH	SIMPLEXGRINNELL	4099-9003
	SSD PHOTO SENSOR	SIMPLEXGRINNELL	4098-9757
	SSD SENSOR BASE	SIMPLEXGRINNELL	4098-9788
	DUCT SENSOR HOUSING	SIMPLEXGRINNELL	4098-9756
	SAMPLING TUBE 73"	SIMPLEXGRINNELL	2098-9798
	S=SUPPLY; R=RETURN		
	REMOTE TEST STA RED LED KEY SW	SIMPLEXGRINNELL	2098-9806
	ZAM CLASS B MONITOR W/RESET	SIMPLEXGRINNELL	4090-9101
	MONITORED IAM	SIMPLEXGRINNELL	4090-9001
	RELAY IAM	SIMPLEXGRINNELL	4090-9002
	P=PRIMARY RECALL; A=ALTERNATE RECALL; E=ELEVATOR HELMET LIGHT; S=CONTROL		
	M#-#	SLC CHANNEL-ADDRESS	
MISCELLANEOUS			
	ENCAPSULATED RELAY, PAM-SD	SIMPLEXGRINNELL	4098-9843
	WATERFLOW	BY OTHERS	
	TAMPER	BY OTHERS	
	130 DEG FIXED TEMP HEAT DET NON-SYSTEM DEVICE-ELEVATOR SHUNT TRIP	CHEMTRONICS	CC-623
	W/P	WEATHERPROOF	
	-W	END-OF-LINE RESISTOR	

- NOTES:**
- ALL WIRE COUNTS ARE BASED ON EQUIPMENT NEEDS. THE TYPE OF WIRE USED (SIZE, INSULATION, # OF STRANDS, ETC.) AND HOW IT IS INSTALLED IS THE SOLE RESPONSIBILITY OF THE ELECT. CONTRACTOR. IT MUST MEET ALL APPLICABLE CODES AND SPECIFICATIONS.
 - SIMPLEX REQUIRES A MINIMUM OF 3/4" CONDUIT. THE INSTALLATION OF THE FIRE ALARM RACEWAY SYSTEM IS THE SOLE RESPONSIBILITY OF THE ELECT. CONTRACTOR. IT MUST MEET ALL APPLICABLE CODES.
 - WIRING COLOR CODE IS HIGHLY RECOMMENDED FOR EASE OF TERMINATIONS. IF COLOR CODE IS NOT USED, LABEL WIRES WITH CORRESPONDING LETTER DESIGNATION.
 - ALL STROBES ARE 75 CANDELLA UNLESS OTHERWISE NOTED.
 - ALL SPEAKERS ARE TO BE WIRED FOR 25V OPERATION AND TAPPED @ 1/4 WATT UNLESS OTHERWISE NOTED.



1440 WEST INDIANTOWN ROAD
SUITE 250
JUPITER, FLORIDA 33458
SALES: 561-277-4140
SERVICE: 561-277-4141
FAX: 561-477-7307

NO.	DATE	REVISION DESCRIPTION	REVISE PER FIELD NOTES	AS-BUILT
1	12/19/05			
2	1/3/06			

FIRE ALARM PLAN

SCALE: 1/8" = 1'-0"

SUNRISE THEATER

115 SOUTH 2ND AVE
FT. PIERCE, FLORIDA

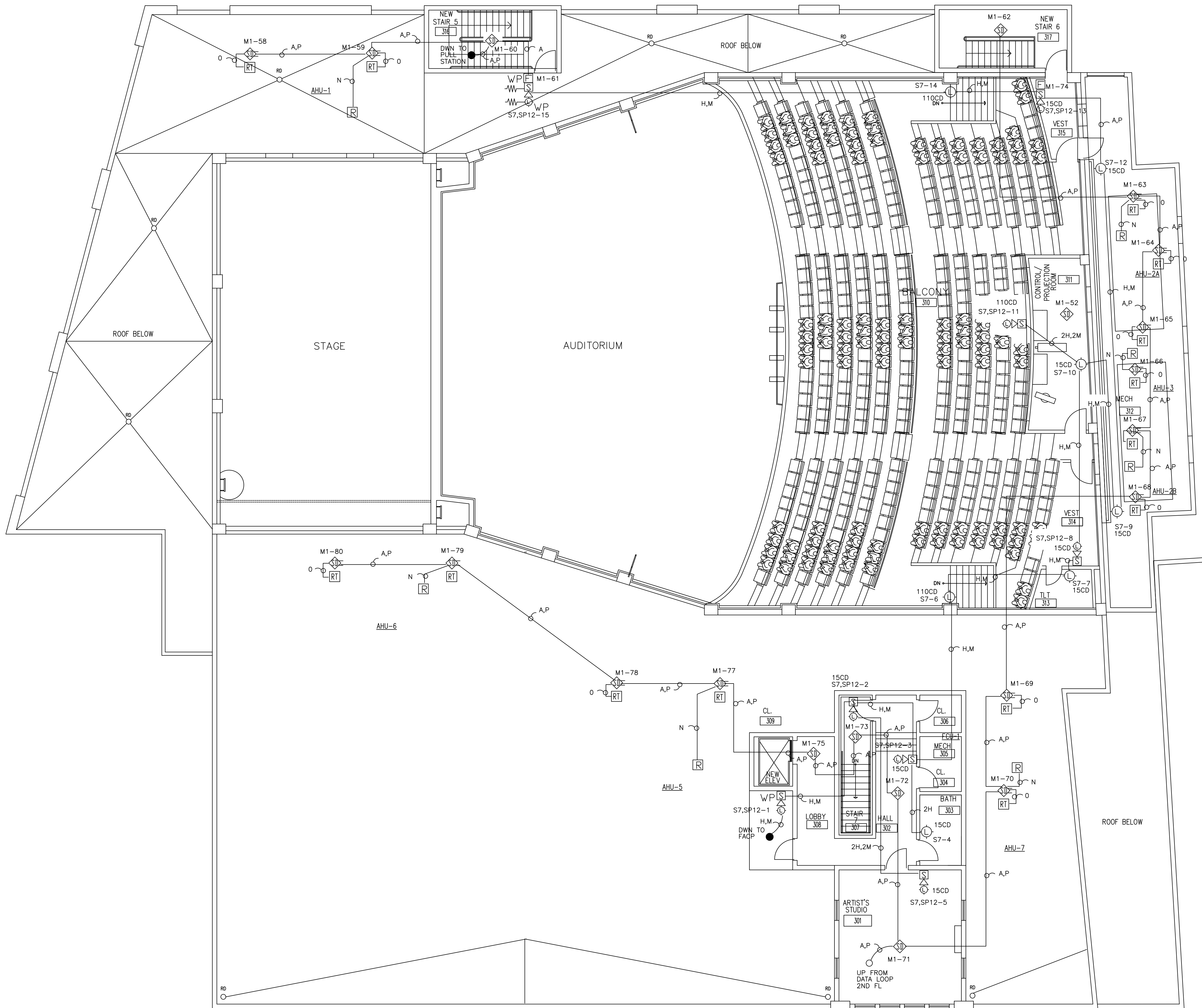
THIS DRAWING IS BASED ON CONTRACT DRAWINGS BY ENGINEER OF RECORD

DATE: 5/11/05

PROJECT NUMBER: 400526-01

SHEET TITLE: SUNTHEATER2.DWG

SHEET NUMBER: FA-2



SYMBOL LEGEND			
SYMBOL	DESCRIPTION	MANUFACTURER	PART NUMBER
PANELS			
	CONTROL PANEL	SIMPLEXGRINNELL	4010-9101
FACP	BACK BOX, BEIGE	SIMPLEXGRINNELL	2975-9423
	BATTERY 18AH	SIMPLEXGRINNELL	2081-9275
FACP	LCD ANNUNCIATOR	SIMPLEXGRINNELL	4606-9101
VCP	VOICE CONTROL PANEL	SIMPLEXGRINNELL	4003-9001
	BATTERY 6.2AH	SIMPLEXGRINNELL	2081-9272
NAC	NAC EXTENDER 120VAC, IDNET	SIMPLEXGRINNELL	4009-9201
	BATTERY 6.2AH	SIMPLEXGRINNELL	2081-9272
AUDIBLE/VISUAL: AUDIBLE & VISUAL ONLY			
SKC	WP 5/V 24VDC RED	WHEELOCK	MTWP-2475W-FR
SKC	S/V 24VDC 75CD RED 25/70V	SIMPLEXGRINNELL	4903-9357
SKC	S/V 24VDC 110CD RED 25/70V	SIMPLEXGRINNELL	4903-9358
	STROBE 75CD RED	SIMPLEXGRINNELL	4904-9169
S#-H	STROBE CIRCUIT-DEVICE COUNT		
SP#-H	SPEAKER CIRCUIT-DEVICE COUNT		
INITIATION			
	PULL STATION IDNET PUSH	SIMPLEXGRINNELL	4099-9003
	SSD PHOTO SENSOR	SIMPLEXGRINNELL	4098-9757
	SSD SENSOR BASE	SIMPLEXGRINNELL	4098-9788
	DUCT SENSOR HOUSING	SIMPLEXGRINNELL	4098-9756
	SAMPLING TUBE 73"	SIMPLEXGRINNELL	2098-9798
SJR	S=SUPPLY; R=RETURN		
	REMOTE TEST STA RED LED KEY SW	SIMPLEXGRINNELL	2098-9806
	ZAM CLASS B MONITOR W/RESET	SIMPLEXGRINNELL	4090-9101
	MONITORED IAM	SIMPLEXGRINNELL	4090-9001
	RELAY IAM	SIMPLEXGRINNELL	4090-9002
P/A/E/C	P=PRIMARY RECALL; A=ALTERNATE RECALL; E=ELEVATOR HELMET LIGHT; S=CONTROL		
MB#-H	SLC CHANNEL-ADDRESS		
MISCELLANEOUS			
	ENCAPSULATED RELAY, PAM-SD	SIMPLEXGRINNELL	4098-9843
	WATERFLOW	BY OTHERS	
	TAMPER	BY OTHERS	
	130 DEG FIXED TEMPERATURE DET	CHEMTRONICS	CC-623
	NON-SYSTEM DEVICE-ELEVATOR SHUNT TRIP		
	WEATHERPROOF		
	END-OF-LINE RESISTOR		

MARK	QTY	AWG	SHIELD	CLASS	DESCRIPTION	COLOR IF NOT SPECIFIED ELSEWHERE
A	1	18/2	YES	S/C	IDNET CRT #1	(RED JACKET)
B	2	12		NAC	STROBE CKT #1	(YELLOW, GRAY)
C	2	12		NAC	STROBE CKT #2	(YELLOW, GRAY)
D	2	12		NAC	STROBE CKT #3	(YELLOW, GRAY)
E	2	12		NAC	STROBE CKT #4	(YELLOW, GRAY)
F	2	12		NAC	STROBE CKT #5	(YELLOW, GRAY)
G	2	12		NAC	STROBE CKT #6	(YELLOW, GRAY)
H	2	12		NAC	STROBE CKT #7	(YELLOW, GRAY)
I	2	12		NAC	VCP TRIP CKT #8	(BROWN, ORANGE)
J	1	18/2	YES	NAC	SPEAKER CKT #9	(BLUE JACKET)
K	1	18/2	YES	NAC	SPEAKER CKT #10	(BLUE JACKET)
L	1	18/2	YES	NAC	SPEAKER CKT #11	(BLUE JACKET)
M	1	18/2	YES	NAC	SPEAKER CKT #12	(BLUE JACKET)
N	2	14		AUX	AHU SHUTDOWN CKT	(BLUE, WHITE)
O	4	14		AUX	DUCT DET TO REMOTE TEST SW	(2 YELLOW, RED, BLACK)
P	2	14		PWR	24VDC PWR CKT	(RED, BLACK)
Q	1	18/2	YES	S/C	ANNUNCIATOR COMMON CKT	(RED JACKET)
R	2	14		IDC	IAM TO MONITORED DEVICE	(BLUE, PURPLE)
S						
T						

- CLASS B WIRING PER NFPA
- NOTES:**
- ALL WIRE COUNTS ARE BASED ON EQUIPMENT NEEDS. THE TYPE OF WIRE USED (SIZE, INSULATION, # OF STRANDS, ETC.) AND HOW IT IS INSTALLED IS THE SOLE RESPONSIBILITY OF THE ELECT. CONTRACTOR. IT MUST MEET ALL APPLICABLE CODES AND SPECIFICATIONS.
 - SIMPLEX REQUIRES A MINIMUM OF 3/4" CONDUIT. THE INSTALLATION OF THE FIRE ALARM RACEWAY SYSTEM IS THE SOLE RESPONSIBILITY OF THE ELECT. CONTRACTOR. IT MUST MEET ALL APPLICABLE CODES.
 - WIRING COLOR CODE IS HIGHLY RECOMMENDED FOR EASE OF TERMINATIONS. IF COLOR CODE IS NOT USED, LABEL WIRES WITH CORRESPONDING LETTER DESIGNATION.
 - ALL STROBES ARE 75 CANDELLA UNLESS OTHERWISE NOTED.
 - ALL SPEAKERS ARE TO BE WIRED FOR 25V OPERATION AND TAPPED @ 1/4 WATT UNLESS OTHERWISE NOTED.

tyco Fire & Security

1440 WEST INDIANTOWN ROAD
SUITE 250
JUPITER, FLORIDA 33458
SALES: 561-277-4140
SERVICE: 561-277-4141
FAX: 561-477-7307

SimplexGrinnell

© 2007 SIMPLEXGRINNELL LP
ALL RIGHTS RESERVED

THIS DRAWING IS BASED ON CONTRACT DRAWINGS BY ENGINEER OF RECORD

TTC Tilden, Lobnitz, Cooper
Engineering & Architecture
600 N. West Shore Blvd. Suite 450
Fort Lauderdale, FL 33309
WWW.TTC-ENGINEERS.COM

REVISION DESCRIPTION

REVISE PER FIELD NOTES

AS-BUILT

NO. DATE

12/19/05 1/3/06

NO. DATE

12/19/05 1/3/06

DRAWN BY:

REVIEWED BY:

PROJECT NUMBER:

400526-01

SHEET TITLE:

SUNTHEATER3.DWG

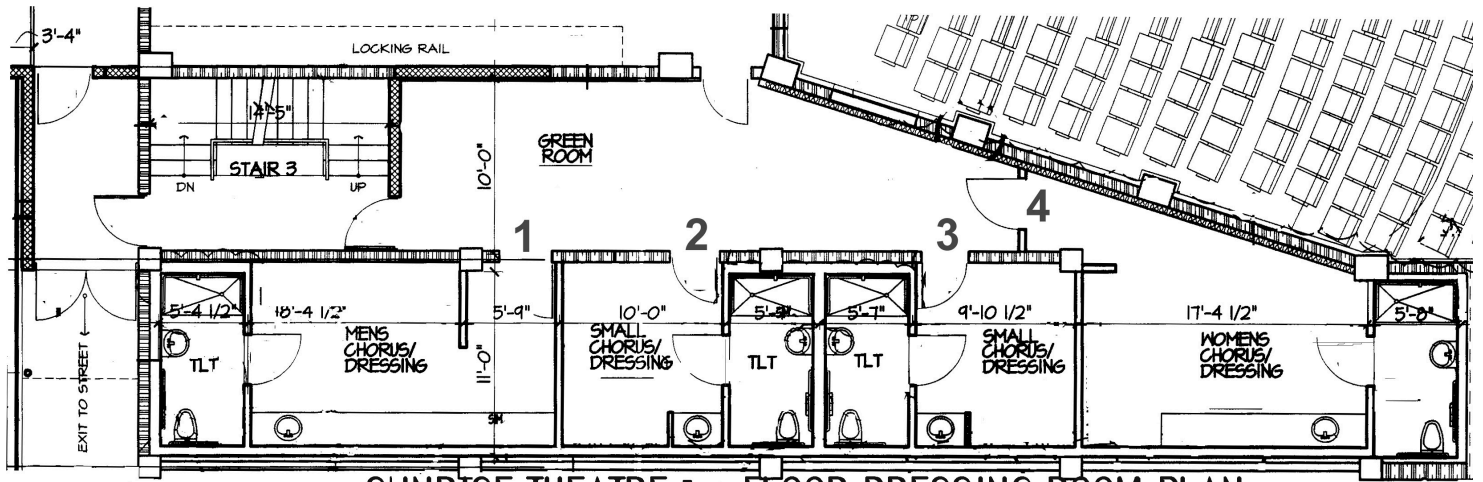
SHEET NUMBER:

FA-3

DATE:

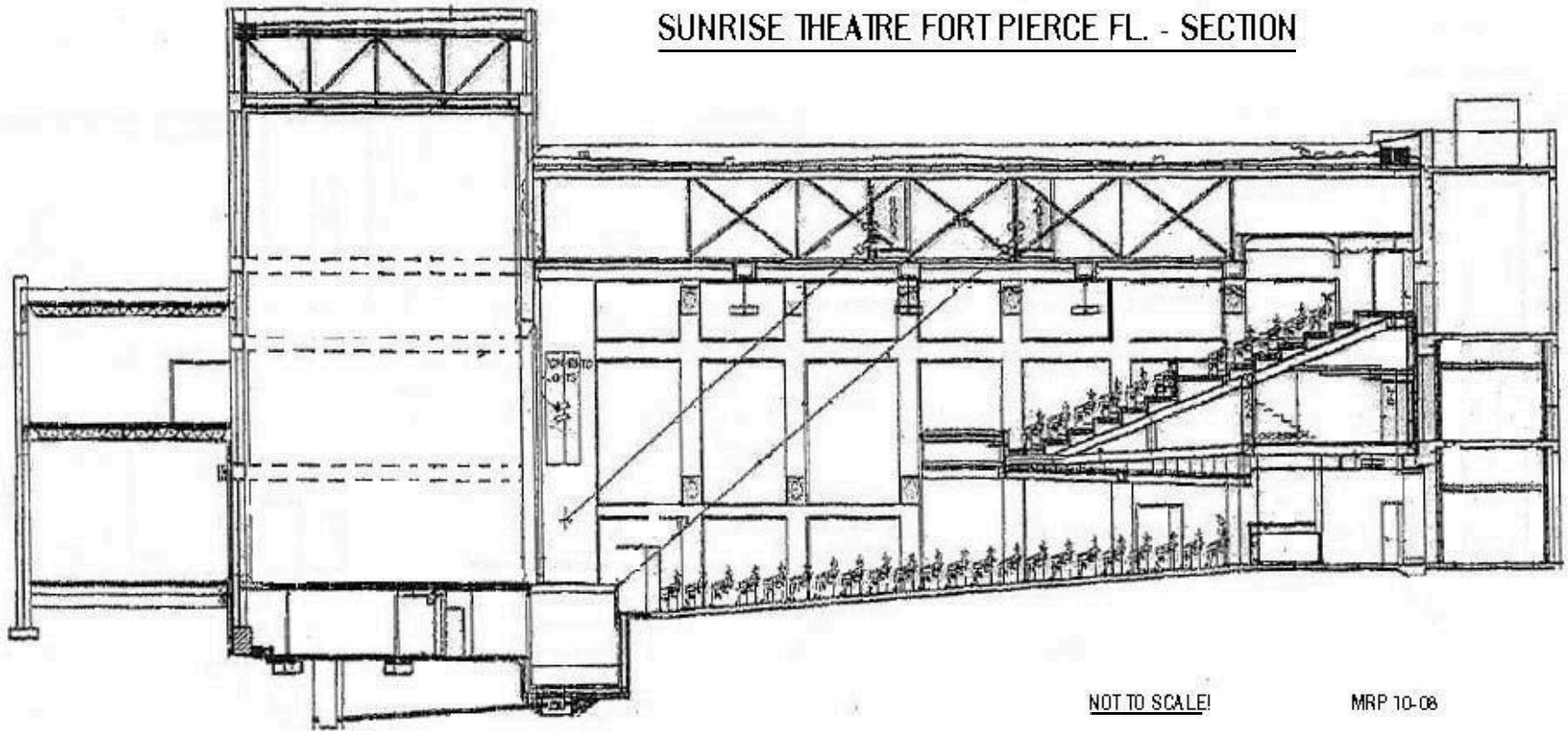
5/11/05

115 SOUTH 2ND AVE
FT. PIERCE, FLORIDA



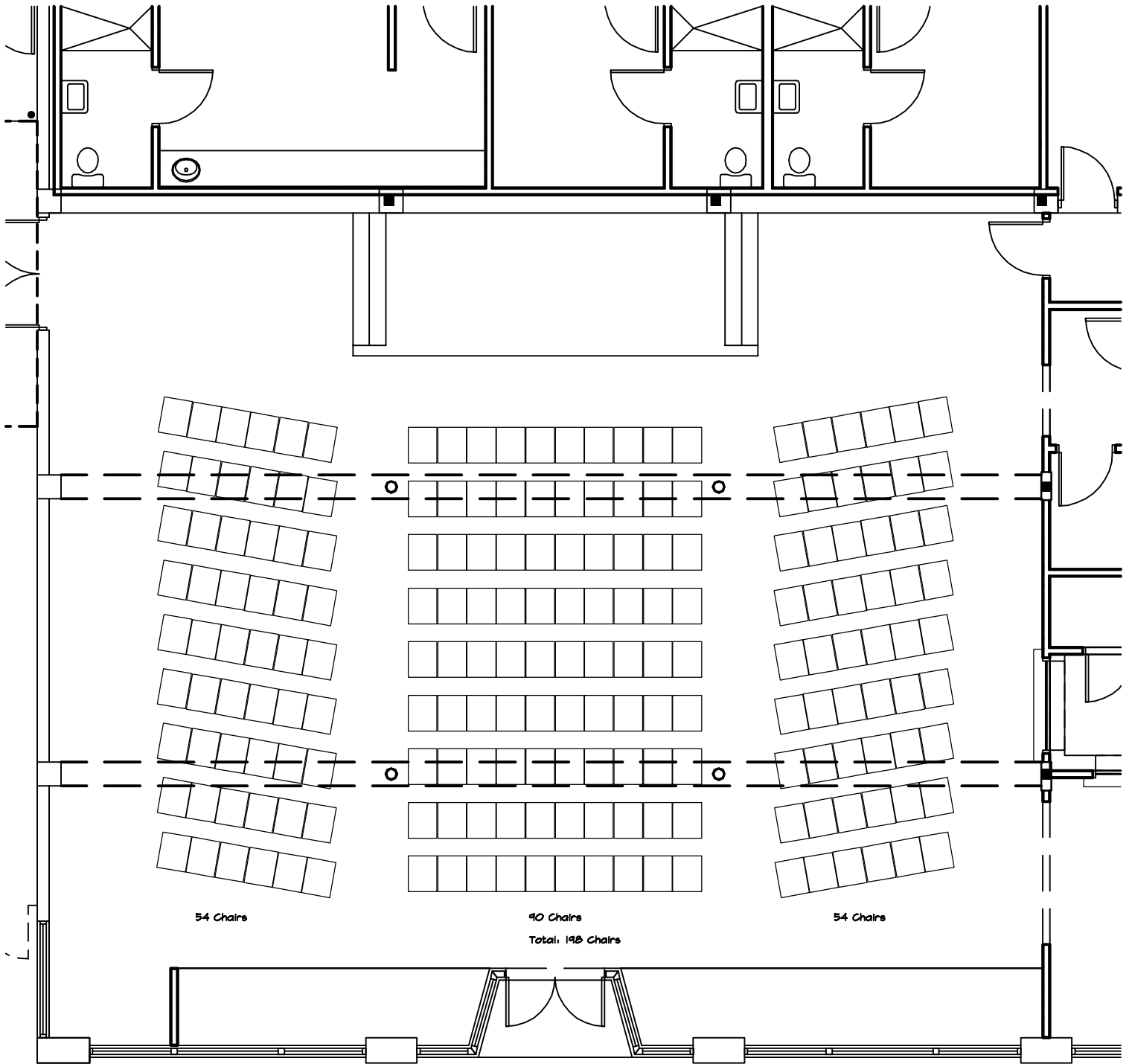
SUNRISE THEATRE 1st FLOOR DRESSING ROOM PLAN

SUNRISE THEATRE FORT PIERCE FL. - SECTION



NOT TO SCALE!

MRP 10-08



Revision: -		Comm. -	Date: -
Supplemental to Drawing No. -		Sketch No. -	
BLACK BOX SPACE AT SUNRISE THEATER FORT PIERCE, FLORIDA		HOWARTH L. LEWIS, JR., FAIA Architects + Planners AR 001384 AA 0002250 225 Southern Boulevard, Suite 100 West Palm Beach, Florida 33405 561 / 833 - 2268 - Fax 561 / 833 - 1963	